



# **AFL HYPERSCALE.**

## Corporate Overview

---

# AFL HYPERSCALE®

## Data Center Cabling and Connectivity Experts



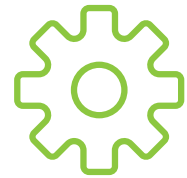
**Fast Support**



**Excellent Value**



**Product Availability**



**Product Innovation**

AFL Hyperscale is the first cabling and connectivity solution provider focused on the ever-evolving needs of data centers.

Hyperscale, colocation, and enterprise data centers are united in their pursuit to connect the unconnected, yet their infrastructure, performance, and operational challenges are totally unique.

We work collaboratively with our customers to create connectivity solutions tailored to their current needs and to the requirements of future networks. We then use our responsive, global operational capabilities and distribution network for fast delivery.

This approach has transformed how many data centers grow worldwide and is built on 70 years' combined experience in the design and manufacture of high-performance optical fiber networks, a global presence, and the backing and innovation sharing of our parent and grandparent companies, AFL and Fujikura, the pioneer in optical technology. AFL Hyperscale is your dependable partner to build a more connected world.

AFL Hyperscale - The World, Connected.

[www.aflhyperscale.com](http://www.aflhyperscale.com)

# Contents

<b>04</b>	Sharing Our Core Values
<b>05</b>	Our Family
<b>06</b>	History and Milestones
<b>07</b>	Our Locations
<b>08</b>	The Data Center Connectivity Experts
<b>11</b>	Solution Overview
<b>14</b>	Working With Us
<b>16</b>	Services
<b>19</b>	Product Overview

# Sharing Our Core Values



## Our Vision

An innovative connectivity solutions company selected by Partners worldwide



## Our Mission

Optimized connectivity solutions driven by innovation



## Our Purpose

To create a consistently profitable and growing business that adds value for our stakeholders.  
Our stakeholders are shareholders, customers, suppliers, employees, and families



## Our Values

Our values are shared globally and define our commitment to our customers, our work, and each other

## Our core values unify our thinking and actions

We strive to create a collaborative environment where people can learn and grow, where all associates have the chance to contribute, and every voice is heard. We encourage you to be inquisitive, to ask questions, to make suggestions, and to join us in creating a workplace culture we can all be proud of!

We also have a strong focus on community and charity work here at AFL Hyperscale. For us, community work is not just about the end results, but also the act of bringing people together.



# Our Family

AFL Hyperscale is part of the AFL family and, in collaboration with our parent company, Fujikura, shares a commitment to serve our communities and create a more connected world. We work closely and collaboratively with our family of companies to ensure our customers have access to the latest technology and the right solution for them.



## Fujikura

Fujikura are a pioneer in ribbon splicing technology, the largest manufacturer of MT ferrules for MPO/MTP® connectors, and the second-largest manufacturer of optical fiber in the world.



\$6.5 billion sales FY20



Established 1885



Market leader and pioneer in optical fiber technology



56,000 employees



\$650m on R&D over the last 5 years

## AFL

AFL focus on innovation that provides optimum value and total cost savings to its customers. This approach has built AFL's reputation as a market leader across cable and fiber network test and inspection equipment.



Established 1984



Commercial activity in 120+ countries



100s of sites across 10 countries



Manufacturer of cable, connectivity, and test equipment



4,500 employees

# History and Milestones



**1970**

Carlyle Inc. founded to supply wire and cable to the aerospace market



**1992**

FibreFab established to supply fiber optic components

**FIBREFAB**

**2013**

AFL acquires FibreFab with a key focus on driving growth within the growing European data center market



**2018**

NetIG and FibreFab unify globally as AFL Hyperscale



**2019**

AFL Hyperscale becomes wholly-owned subsidiary of AFL

**1982**

Starts to manufacture network cable, Carlyle Network Infrastructure Group is born



**2006**

Carlyle Network Infrastructure Group becomes NetIG



**2015**

AFL and NetIG form a joint venture to support global hyperscale customers

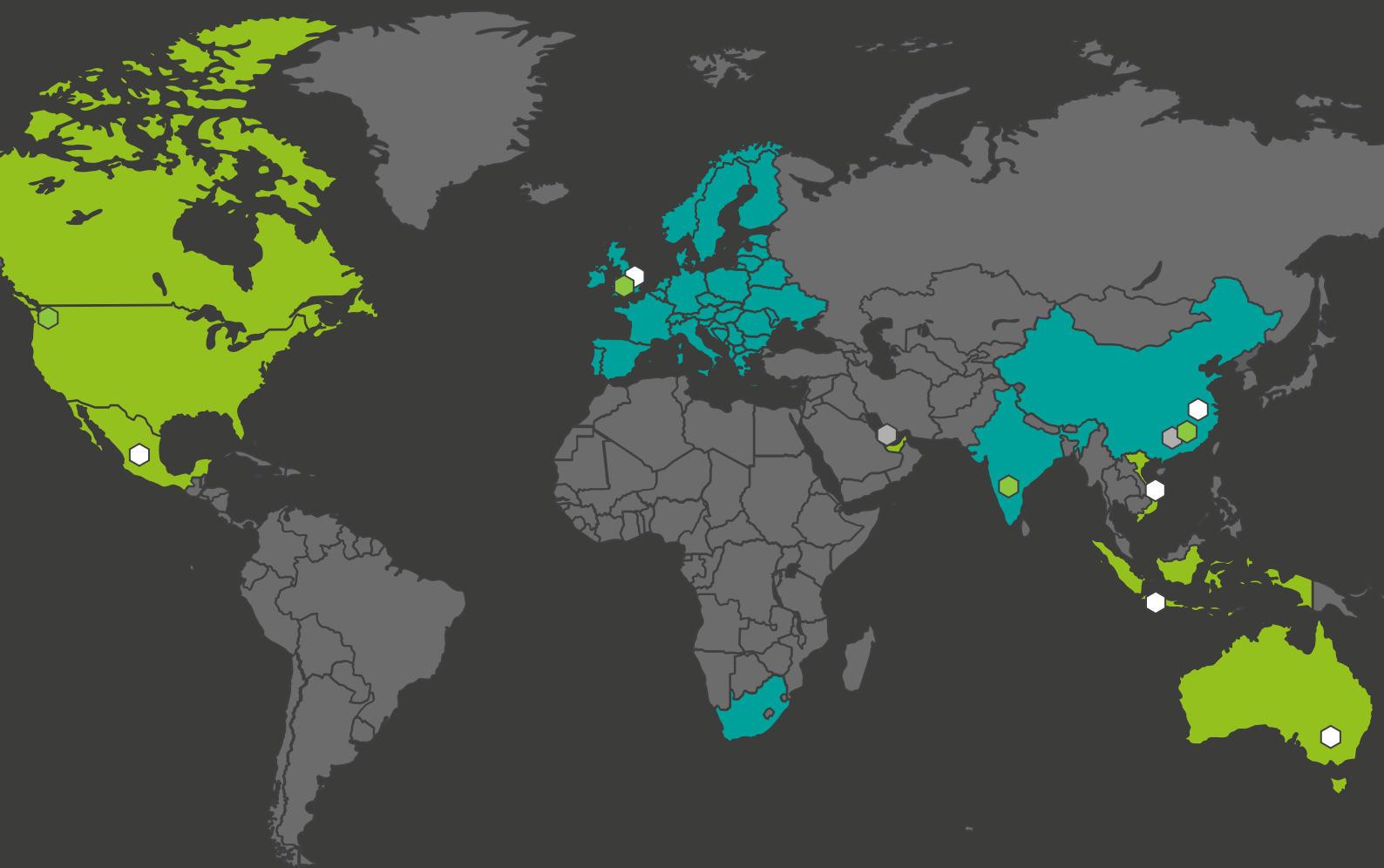


**2018**

New locations opened in India, Hong Kong, and Australia



# Our Locations



Countries sold to



Sales offices



Group manufacturing locations



Globally unified team



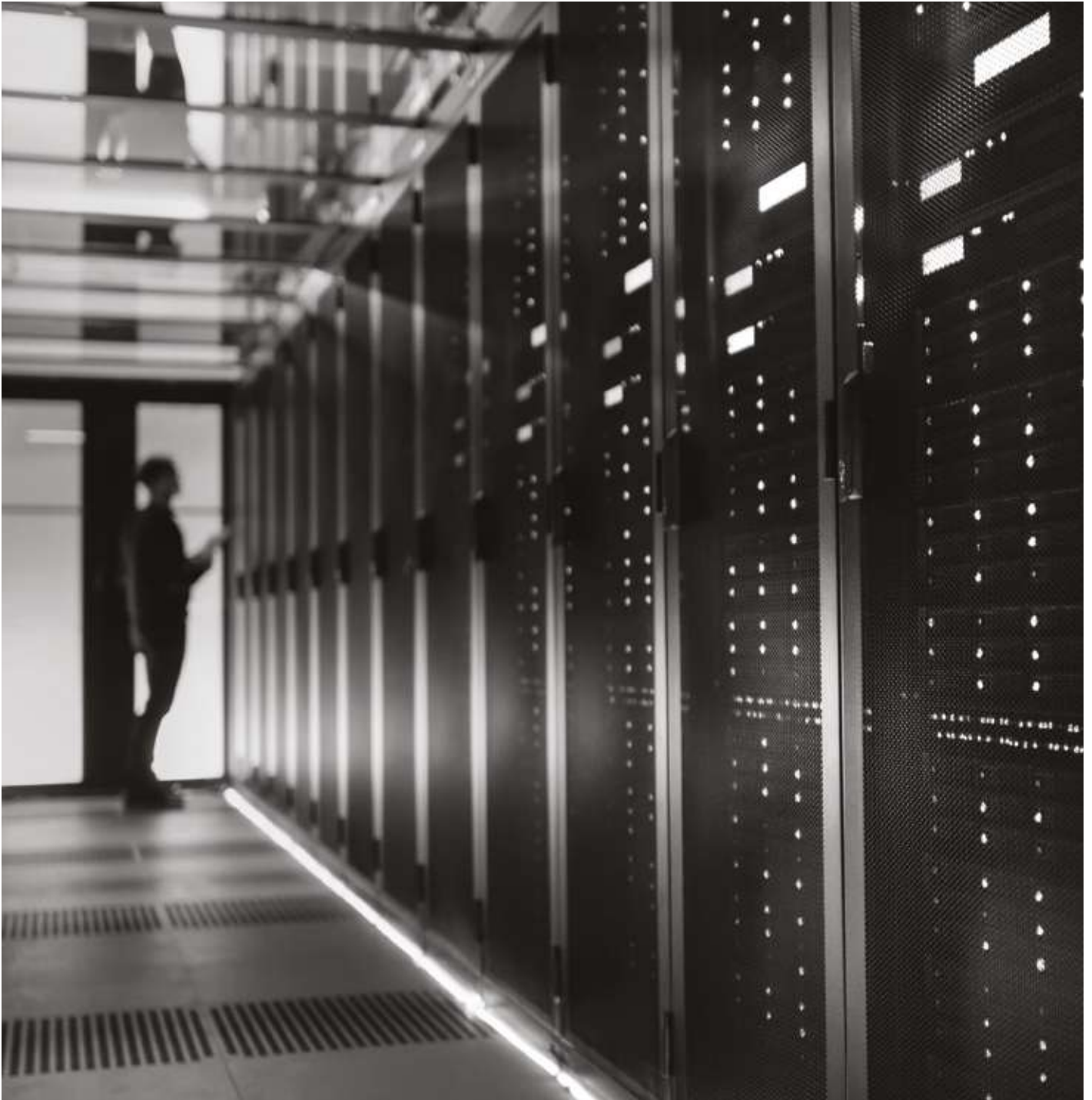
## Our Credentials

# Our Customers

We pride ourselves on being a dependable partner for many of the world's largest cloud companies, social media platforms, and colocation providers, enabling them to grow and innovate - faster than any other cabling or connectivity manufacturer.

With a world-class technical team available to assist both in the field and back office, supported by pro-active global account management and highly responsive local support (in more than 25 languages), wherever you are in the world, we are here to help.



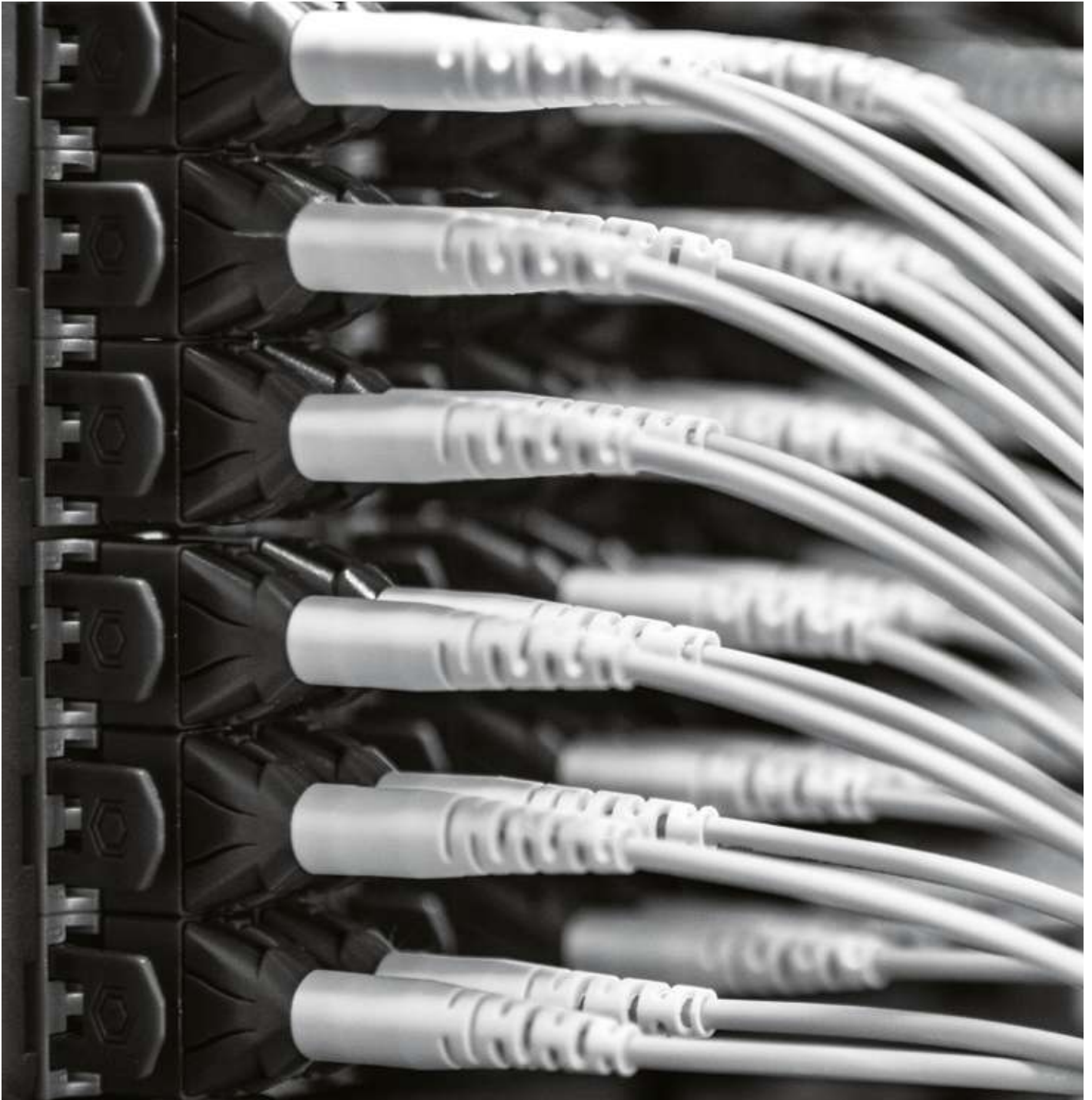


## Our Credentials

# Data Center Network Innovation

The need for more connectivity is changing data center network design at a rapid pace, meaning networks need to be able to upgrade and expand as efficiently as possible, often through multiple technology generations to deliver the most value.

Our customers' connectivity objectives, goals, and challenges drive our innovation - so much so, that we have dedicated fiber connectivity R&D across three continents with a constant focus on large data centers.



## Our Credentials

# Solution and Product Availability

Wherever your data center and whatever the network area, we create cabling and connectivity solutions that are fit for purpose today and in the future.

With full access to AFL and Fujikura's product portfolio along with our own ever-growing range of custom-made and off-the-shelf products, we have the capability to provide an end-to-end network cabling connectivity solution, including the equipment and training to install, test, and inspect your network.

# Solution Overview

The extraordinary growth of data consumed and generated from cloud computing, the Internet of Things (IoT), 5G, video streaming, gaming, machine-to-machine learning, and artificial intelligence has had a dramatic impact on network speeds and bandwidth requirements.

Hyperscale and colocation data centers have had to scale and innovate at an unprecedented rate to keep in front of data demands. AFL Hyperscale provide scalable, flexible cabling and connectivity solutions designed for fast and easy installation, efficient fiber management, and reliability to support your growing data center network, future-proofing it for years to come.

## Data Center Solutions



### Hyperscale

Flexible, end-to-end data center infrastructure designed to enable hyperscale and cloud providers to scale their networks to meet the ever-increasing demand for higher bandwidth and faster transmission speeds, and build a more connected world.

[Visit page](#)

### Colocation

Flexible, scalable, high-performance fiber infrastructure designed to support increasingly demanding applications and customer requirements - from outside plant cable to the customer cage.

[Visit page](#)

# Network Solutions

Across modular connectivity, SpiderWeb Ribbon®, mass-fusion splice, and much more, our network solutions make it easy for you to find the perfect product for your network, whatever the application.



## Ultra-High Fiber Count

Ideal for data center networks that require rapid interconnection between and within data center buildings on a scale never seen before.

[View Solution](#)

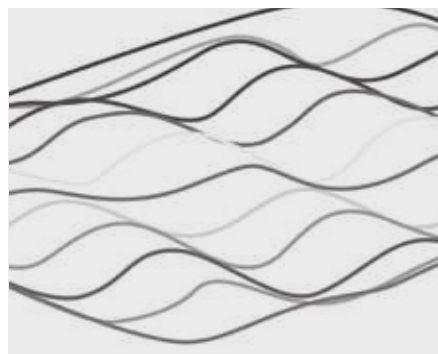
## Network Speed

Flexible, easy-to-install solutions for 400G, 100G, or 40G deployments.

[View Solution](#)

## Modular Connectivity

Across high-density, tray-based, shallow-depth, and low/medium density applications, we have the right modular connectivity solution for your network.

[View Solution](#)

## SpiderWeb Ribbon®

SWR® technology maximizes fiber counts, minimizes space utilized in ducts and raceways, and simplifies high-fiber count installations.

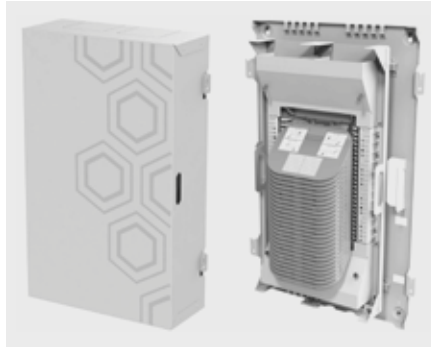
[View Solution](#)





## Building Entrance Facility

Transition from outside plant cable to inside plant cable with our range of fast and efficient entrance facility solutions including mass-splice frames, wall-mountable cabinets, and rack-mountable panels.

[View Solution](#)


## Mass-Fusion Splice

Significantly reduce installation time, improve fiber management efficiencies and build a more reliable network with our range of mass-fusion splice solutions

[View Solution](#)


## Pre-Terminated

Pre-terminated solutions designed to make on-site installation fast and easy, alleviating the need for field termination or splicing and reducing installation time by up to 75%.

[View Solution](#)

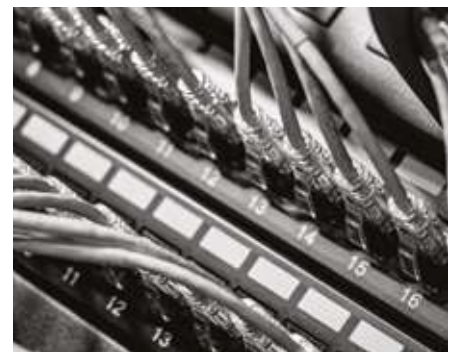

## Network Installation

Range of fiber optic cleaning, inspection, and test equipment ideal for installing and maintaining high-density networks in data centers.

[View Solution](#)


## Fiber Raceway

Flexible, reliable routing to support ever-evolving data center networks.

[View Solution](#)


## Copper

A comprehensive portfolio of category-rated copper solutions to support your network including copper network cable, patch cords, panels, and cable management, as well as flexible and configurable pre-terminated assemblies.

[View Solution](#)

---

# Working With Us



## 01 Consultation

### How can we help?

Openness, collaboration, and responsiveness are fundamental to our customer-centric approach. We listen, gain insight, and then deliver a connectivity solution right for your data center.

With a full understanding of your goals and objectives, our expert consultants help you overcome complex challenges, realize large-scale network design, and achieve growth and scale customers may not have even thought possible.



## 02 Development

### How we do it

Emerging technology is fully integrated into our thinking, strategies, and purpose, and our connectivity solutions are often at the forefront of what the market has to offer.

We develop innovative, fit-for-purpose solutions using our extensive patent portfolio and family technology. With access to a comprehensive array of products, solutions, and network configurations to use, modify, or customize, we deliver technology-led, quality-assured network solutions.



## 03 Production

### Manufactured to your needs

We offer some of the best lead times in the market for high volume, high-performance, custom, pre-terminated assemblies.

With manufacturing locations across four continents, we have a fast, scalable, integrated supply chain that ensures consistency across all manufacturing sites. Customers across the globe can get local, efficient assistance with critical projects, in some cases benefiting from next-day delivery on custom pre-terminated assemblies, as well as a quick turnaround for high-volume orders.



## 04 Quality and Standards

### Peace of mind

We help cloud and colocation providers create high-performance network specifications that can be rolled out globally, adhering to regional industry standards and regulations.

Given the growth in data traffic and the need to provide high-bandwidth, low-latency connections, some cloud platforms work in advance of industry standards. We offer expert advice on engineering and manufacturing best practice to support in these instances.

We support multiple standards committees including BSI, IEC, CENELEC, TIA, and EIA.



## 05 Logistics

### What you need, when you need it

With international shipping expertise, we can save you time and money. From warehouse shipment to direct delivery to a secure site, from a single box to a full container, we have a fully integrated logistics network to ensure our products get to you when you need them.

Our logistics capabilities don't stop there, we can label packaging, boxes, and pallets to ensure they go to the correct hall, aisle, rack, panel, and even port, for the fastest possible site-to-port installation.



## 06 Customer Service

### Here to help

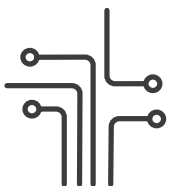
One of our core values is to be customer-centric. From pre-sales to post-sales, we offer first-class support at every stage of the customer journey.

Our field and solution engineers work with you to scope out your requirement. This can be anything from custom product design all the way up to full physical layer connectivity. We then assemble the right team to deliver and further support your needs.

We ensure you have the right support where and when you need it.



# Services for a More Efficient Data Center Network



## Network Design

Need help making the right decisions for your physical layer? We can assist you with network designs that are tailored not only to today's needs but to future network requirements.

Our RCDD and CNIDP qualified engineers can assist with all manner of connectivity design requests including anything from product recommendations and creating ultra-high fiber count interconnectivity for data center clusters, to designing an automated physical layer for a true 'lights-out' data center.



## Custom Design

Our globally deployed, in-house engineering team utilizes the latest design and rapid prototyping techniques to bring customer-led products to life. We offer fast, quality-assured, custom product design to help you overcome infrastructure challenges of any size and scale.

Customers can also use our suite of online configurators to build and order their own pre-terminated fiber assemblies.

Our market-leading design engineering team has expertise and experience across fiber cable assemblies, cable, fiber management, enclosures, racks, and cabinets.



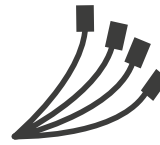


## Hyperspeed Service

With same-day manufacturing capability, our Hyperspeed Service means you can order custom pre-terminated fiber and copper assemblies and have them delivered to site when you need them.

Our factories across the globe boast a quick turnaround, meaning we can build to your exact specification and deliver it promptly, from high-performance MPO trunks and fanouts to pre-terminated fiber assemblies. Never worry about tight deadlines or long lead times for your connectivity again.

Next-day delivery may not be available across all countries, contact us for further details.



## Rapid Cabling Infrastructure (RCI)

Ensure the fastest and most efficient network installation and reduce packaging waste with our RCI service.

Rack-to-rack, cabinet-to-cabinet, building-to-building, and port-to-port - any two connection points in your data center network, in virtually any network architecture, can take advantage of RCI. If you are using copper or optical fiber cable to connect any devices, we can design, build, and package a solution that routinely saves 50% on installation time.

[www.aflhyperscale.com](http://www.aflhyperscale.com)



## Installer Training

AFL Hyperscale Installation Training gives installers or site engineers the chance to get hands-on experience with our latest products and technology for a high-performing, well-maintained data center network. Learn best practices to test, inspect, and maintain networks using the latest AFL test, inspection, and cleaning equipment, and Fujikura splicing technology.

This training course enables installers to provide a 25-year applications assurance that the AFL Hyperscale Network will operate, support, and remain compliant with the cabling standards it was designed for.



## Global Alignment

We provide global coverage ensuring network consistency and support for new technology roll-outs. We do this by establishing customer objectives and strategies, and then measurable action plans to achieve them.

With globally standardized part numbers, ordering across regions is easier than ever, helping you ensure complete product uniformity, worldwide.

On a local level, we work to continually build relationships, addressing local needs including standards and regulations, transacting in local currencies if required, providing hands-on product training, and offering fast local delivery.

# Product Overview

All you need for an end-to-end data center connectivity solution

## Assemblies

Multi-Fiber assemblies  
MPO Assemblies  
Cassette Assemblies  
Patch Cords  
Pigtails

## Cable

SpiderWeb Ribbon® Cables  
Inside Plant (ISP)  
Inside Plant (ISP) /Outside Plant  
Cable (OSP)  
Outside Plant Cable (OSP)

## Adapters and Connectors

Adapters  
Attenuators  
Connectors  
Field Installable Connectors (FIC)

## Panels and Housings

Housings  
Cassettes for Housings  
Housing Accessories  
Sliding Panels  
Fixed Panels  
Pivot Panels

## Cable Management

Cable Management Bars  
Brush Strips  
Blanks  
Cable Management Accessories

## Cabinets, Frames, and Enclosures

Cabinets  
Frames  
Optical Distribution Frames (ODF)  
Outside Enclosures  
Raceway  
Wall Boxes

## Active Equipment

Active Optical Cables (AOCs)  
AOC Bundling  
Direct Attach Cables (DACs)  
Media Convertors  
Power Distribution Units (PDUs)

## Test and Inspection

Fiber Inspection  
Fiber Testing  
Light Source and Power Meters  
OTDRs  
Visual Fault Locators

## Accessories and Cleaning

Splice Cassettes  
Splice Protectors  
Fiber Management

## Copper

Cable  
Patch Cords  
Panels  
Keystone Jacks  
Faceplates  
Hand Tools

[www.aflhyperscale.com](http://www.aflhyperscale.com)

